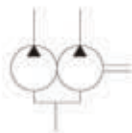


VQ Double Vane Pumps for Mobile



■ Symbol



■ How to order

(F3-)	****VQ	**	A	**	(F)	-*	*	10	*
Prefix	Series	▲ Code	Port	▲ Code	Mounting	Shaft	Port	De-	Rotation
Omit-using:		(shaft end pump)	connec-	(cover end pump)	Omit	1-Straight key	orienta-	sign	(viewed
Antiwear oil	2520VQ	10,12,14,15,17,19,21	tion	2,3,4,5,6,7,8,9,10,11,	Flange	86-HD.	tion	10	from shaft
water			A-SAE	12,14	mounting	straight key	See		end of
glycol fluid	3520VQ	21,25,30,32,35,38,45	4-Bolt	2,3,4,5,6,7,8,9,10,11,	F-Foot	11-Spline	below		pump)
F3:			flange	12,14	mounting		table		L-CCW
Phosphate	3525VQ	21,25,30,32,35,38,45		10,12,14,15,17, 19,21					R-CW
ester fluid									
	4520VQ	42,45,50,57,60,66,75		2,3,4,5,6,7,8,9,10,11,					
				12,14					
	4525VQ	42,45,50,57,60,66,75		10,12,14,15,17, 19,21					
	4535VQ	42,45,50,57,60,66,75		21,25,30,32,35,38,45					

Rated capacity (USgpm) at 1200 rpm.0.69MPa(100psi)

■ Port orientation table (viewed from cover end of pump)

Port orientation		All series (except 4535VQ)	4535VQ
With No.1 outlet opposite inlet	AA	No.2 outlet 135° CCW from inlet	No.2 outlet opposite inlet
	AB	No.2 outlet 45° CCW from inlet	No.2 outlet 90° CCW from inlet
	AC	No.2 outlet 45° CW from inlet	No.2 outlet in line with inlet
	AD	No.2 outlet 135° CW from inlet	No.2 outlet 90° CW from inlet
With No.1 outlet 90° CCW from inlet	BA	No.2 outlet 135° CCW from inlet	No.2 outlet opposite inlet
	BB	No.2 outlet 45° CCW from inlet	No.2 outlet 90° CCW from inlet
	BC	No.2 outlet 45° CW from inlet	No.2 outlet in line with inlet
	BD	No.2 outlet 135° CW from inlet	No.2 outlet 90° CW from inlet
With No.1 outlet inline with inlet	CA	No.2 outlet 135° CW from inlet	No.2 outlet opposite inlet
	CB	No.2 outlet 45° CCW from inlet	No.2 outlet 90° CCW from inlet
	CC	No.2 outlet 45° CCW from inlet	No.2 outlet in line with inlet
	CD	No.2 outlet 135° CW from inlet	No.2 outlet 90° CW from inlet
With No.1 outlet 90° CW inlet	DA	No.2 outlet 135° CW from inlet	No.2 outlet opposite inlet
	DB	No.2 outlet 45° CCW from inlet	No.2 outlet 90° CCW from inlet
	DC	No.2 outlet 45° CCW from inlet	No.2 outlet in line with inlet
	DD	No.2 outlet 135° CW from inlet	No.2 outlet 90° CW from inlet