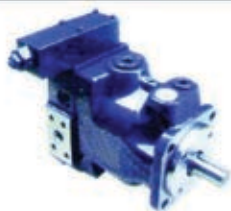
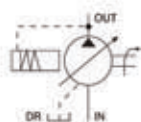


PV16 High Pressure Variable Displacement Piston Pumps



Symbol



How to order

PV	16	A3	R	M	3	A	-
Series	Delivery (L/min)	Com-pensator	Rotation	Mounting	Thread code	Voltage	Seals:-
	Refer to specification	Refer to table	R: CW L: CCW	code M: Flat key K: SAE	1: BSPP(G) Metric 2: PT(RC) British 3: NPT British	A: AC100V(50-60Hz) B: AC110V(60Hz) C: AC220V(50-60Hz) D: AC220V(60Hz) E: DC12V F: DC24V	NBR V: FKM

Specification

Model	Pressure adjusting range (kg/cm ²)	Max. pressure (kgf/cm ²)	Disp. (L/min)	Flow of unloading 1500prpm (L/min)	Full flow 1500prpm (L/min)	Speed (rpm)		Port size			Weight (kg)
						Max.	Min.	Out	In	Dr.	
PV16	1: 10-140 2: 40-210 3: 70-350	420	16	24	15.5	3000		φ19	φ32	1/2"	19
PV20			20	30	19.5						
PV23			23	34.5	22.5						
PV32			2800	300	32	48	31	φ25	φ38	3/4"	30
PV40					40	60	39				
PV46					46	69	45				
PV63			2800	300	63	94.5	61.5	φ32	φ50	3/4"	60
PV71					71	106.5	69.5				
PV80					80	120	78				
PV92			2400	90	92	138	89.5	φ32	φ64	1"	90
PV140					140	210	136				
PV180					180	270	175				
PV270			270	405	263	φ38	φ88	11/4"	172		

Pump control types

Type	A: standard pressure compensator	DR: electrical unloading	EF: 2 pressure electrical selection	ED: 2 pressure electrical unloading	FV: Proportional displacement control
Curve					
Curve					