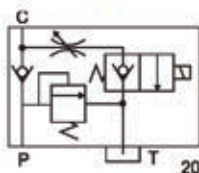


LV Cartridge Solenoid Check Lift Valves



Symbol

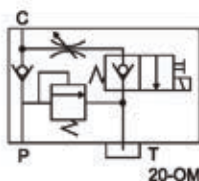


Specification

LV-20A64F-20- ※						
Normally closed-NC		Max. flow	Rated flow	Max.pressure kgf/cm ²	Operating temperature range	Weight (kg)
NC	NO	20 L/min (5.3 G.P.M)	15 L/min (4 G.P.M)	250	-20℃ ~ 120℃	0.6(1.3) including coil
20						



Symbol



Specification

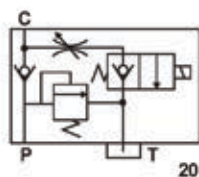
LV-20A64F-20-OM- ※						
Normally closed-NC		Max. flow	Rated flow	Max.pressure kgf/cm ²	Operating temperature range	Weight (kg)
NC	NO	20 L/min (5.3 G.P.M)	15 L/min (4 G.P.M)	250	-20℃ ~ 120℃	0.6(1.3) including coil
20						

- OM: With manual

Specification



Symbol



LV-20A73T-20- ※						
Normally closed-NC		Max. flow	Rated flow	Max.pressure kgf/cm ²	Operating temperature range	Weight (kg)
NC	NO	20 L/min (5.3 G.P.M)	15 L/min (4 G.P.M)	250	-20℃ ~ 120℃	0.93(2.0) including coil
20						