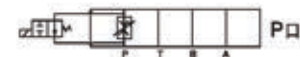


MFST Modular Solenoid Flow Valves (Pressure Compensated)



■ Specification

Symbols



Model	Flow adjusting range (L/min)	Max.operated pressure (kg/cm ²)	Free flow (L/min)	Connection size	Weight (kg)
MFST-02-2-※	0.01 - 2	70-140	20-30	PT1/4	2.22
MFST-02-4-※	0.01 - 4				
MFST-02-6-※	0.01 - 6				
MFST-03-2-※	0.01 - 2	70-140	30-60	PT3/8	3.55
MFST-03-4-※	0.01 - 4				
MFST-03-8-※	0.01 - 8				
MFST-03-12-※	0.01 - 12				