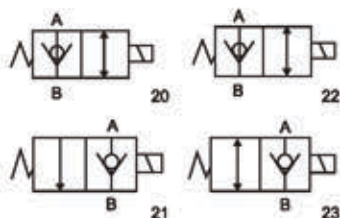


SCV Cartridge Solenoid Check Valves



Symbol



Specification

SCV-20A66C-20-※						
Normally closed-NC		Max. flow	Rated flow	Max.pressure kgf/cm ²	Operating temperature range	Weight (kg)
NC	NO	20 L/min (5.3 G.P.M)	15 L/min (4 G.P.M)	250	-20℃ ~ 120℃	0.28(0.61) including coil
20						
22						

Specification

SCV-20A66C-20-OM-※						
Normally closed-NC		Max. flow	Rated flow	Max.pressure kgf/cm ²	Operating temperature range	Weight (kg)
NC	NO	20 L/min (5.3 G.P.M)	15 L/min (4 G.P.M)	250	-20℃ ~ 120℃	0.3(0.66) including coil
20						
22						

* OM: With manual

Specification

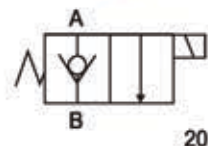
SCV-20A67B-20-※						
Normally closed-NC		Max. flow	Rated flow	Max.pressure kgf/cm ²	Operating temperature range	Weight (kg)
NC	NO	20 L/min	15 L/min	250	-20℃ ~ 120℃	0.69(1.51) including coil
20						

Specification

SCV-20A68T-20-※						
Normally closed-NC		Max. flow	Rated flow	Max.pressure kgf/cm ²	Operating temperature range	Weight (kg)
NC	NO	20 L/min (5.3 G.P.M)	15 L/min (4 G.P.M)	250	-20℃ ~ 120℃	0.46(1.0) including coil
20						



Symbol



Symbol

